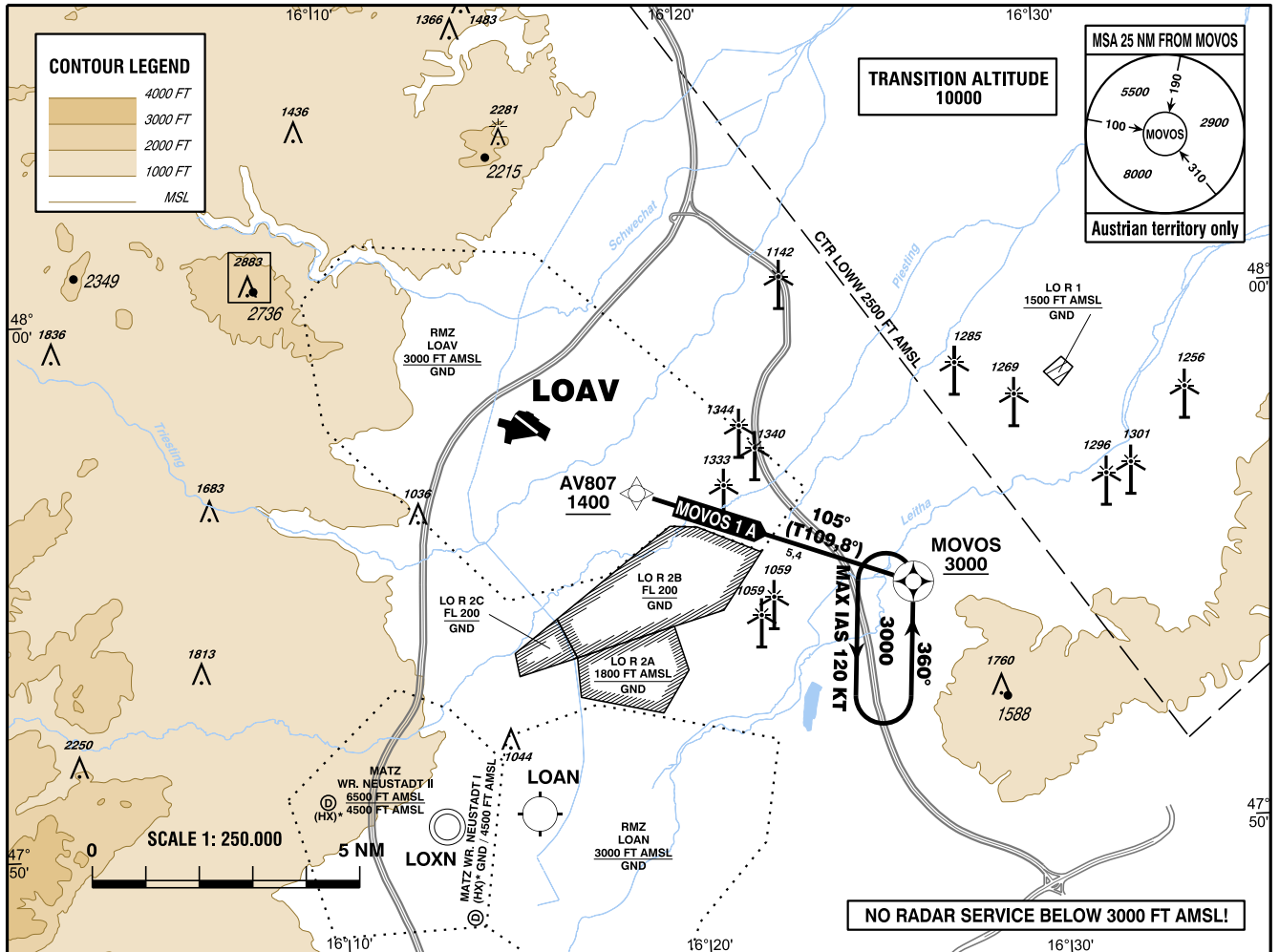


**STANDARD DEPARTURE  
CHART - INSTRUMENT  
(SID) - ICAO**

WIEN RADAR	133.685
	134.675
WIEN INFORMATION	118.525
VÖSLAU RADIO	118.605

**VÖSLAU**  
ÖSTERREICH AUSTRIA

VAR 5° E



CHANGE: CALL SIGN; OBSTACLES; EDITORIAL

- GNSS required
- RNAV 1 or P-RNAV approval required

BEARINGS AND TRACKS  
ARE MAGNETIC

TRACKS IN BRACKETS  
ARE TRUE

ALTITUDES, ELEVATIONS  
AND HEIGHTS ARE IN FEET

DISTANCES ARE IN NM

**Departing from LOAV only allowed as VFR flight,  
IFR starts, when passing AV807 and 1400 FT AMSL or above**

**IFR procedure partly within airspace class G**

**Operating as IFR flight along SID subject to ATC clearance**

**Obtain clearance on FREQ 133.685**

**Flights shall comply with the rules of RMZ and contact ATC  
when passing AV807**

Designator	Route	After Take-Off		Remarks
		Climb to ..initially	Expect FREQ	
<b>MOVOS 1 A</b> Movos one alfa departure	AV807 - MOVOS	By ATC	WIEN RADAR 134.675	Climb gradient at least 4,9% (300 FT/ NM).

Contact WIEN RADAR when passing AV807

**RNAV SID Coding Table of MOVOS 1 A**

Path Terminat or	Waypoint			Course/ Track ° MAG (° True)	DIST NM	Turn Direction	Constraints		Navigation Specification	Remarks
	Identifier	Flyover	Coordinates				Level	Speed		
IF	AV807		N475631.21 E0161838.45				A1400+		RNAV 1	
TF	MOVOS	yes	N475440.60 E0162614.08	105° (109.8°)	5.4		A3000+		RNAV 1	

**RNAV Holding**

Holding Point	Inbound Track ° True	Inbound Track ° MAG	Turn Direction	MAX IAS	Minimum Holding Altitude FT MSL / FL	Time	DIST NM	Remarks
MOVOS	003.6°	360°	left	K120-	A3000	1 MIN		